

1-stage filter with 1-phase CEE connector

new



CEE Connector
yellow



CEE Connector
blue

See below:
[Approvals and Compliances](#)

Description

- Line filter in industrial version
- 1 stage
- high attenuation

Unique Selling Proposition

- First CEE power entry module with filter
- Easy prewired solution
- Universal flange for front or rear mounting
- Optimal filter position direct on the power entry

Characteristics

- Protection against interference voltage from the mains
- Possible interferences generated in the equipment are strongly attenuated
- Suitable for equipment with detachable power cord

References

Weblinks

[pdf data sheet](#), [html datasheet](#), [General Product Information](#), [Approvals](#), [Distributor-Stock-Check](#), [Detailed request for product](#), [Microsite](#)

Technical Data

| | |
|---------------------------------|-------------------------------------------------------------------------|
| Ratings IEC | 16 - 32A @ Ta 40 °C / 250VAC; 50Hz |
| Ratings UL/CSA | 16 - 30A @ Ta 40 °C / 125/250VAC; 60Hz |
| Leakage Current | industrial < 1 mA (250V / 50Hz) |
| Dielectric Strength | 2.25kVDC between L-N 2.25kVDC between L/N-PE Test voltage (2 sec) |
| Allowable Operation Temperature | -40 °C to 85 °C |
| Climatic Category | 40/085/21 acc. to IEC 60068-1 |
| IP-Protection | IP20 IEC 60529 |
| Protection Class | Suitable for appliances with protection class I acc. to IEC 61140 |
| Terminal | Screw clamps |
| Material | Metal |

| | |
|-------------|----------------------------------------------------------------------------------------------|
| Line Filter | Industrial version, IEC 60939, UL 1283, CSA C22.2 no. 8 Technical Details |
| MTBF | > 200'000h acc. to MIL-HB-217 F |

Approvals and Compliances

Detailed information on product approvals, code requirements, usage instructions and detailed test conditions can be looked up in [Details about Approvals](#)

SCHURTER products are designed for use in industrial environments. They have approvals from independent testing bodies according to national and international standards. Products with specific characteristics and requirements such as required in the automotive sector according to IATF 16949, medical technology according to ISO 13485 or in the aerospace industry can be offered exclusively with customer-specific, individual agreements by SCHURTER.

Approvals




The approval mark is used by the testing authorities to certify compliance with the safety requirements placed on electronic products.

Approval Reference Type: FMAB CEE

| Approval Logo | Certificates | Certification Body | Description |
|---------------|---------------------------------|--------------------|--------------------------------|
| | SEMKO Approvals | SEMKO | Certificate Number: SE/09137-3 |
| | UL Approvals | UL | UR File Number: E72928 |


Product standards

Product standards that are referenced

| Organization | Design | Standard | Description |
|----------------------------------------------------------------------------------|-----------------------|-----------------|--------------------------------------------------------------|
|  | Designed according to | IEC 60939 | Passive filters for suppressing electromagnetic interference |
|  | Designed according to | UL 1283 | Passive filters for suppressing electromagnetic interference |
|  | Designed according to | CSA C22.2 no. 8 | Electromagnetic interference (EMI) filters |






Application standards

Application standards where the product can be used

| Organization | Design | Standard | Description |
|----------------------------------------------------------------------------------|--------------------------------|----------------|-----------------------------------------------------------------------------------------------|
|  | Suitable for applications acc. | IEC/UL 62368-1 | Audio/video, information and communication technology equipment - Part 1: Safety requirements |

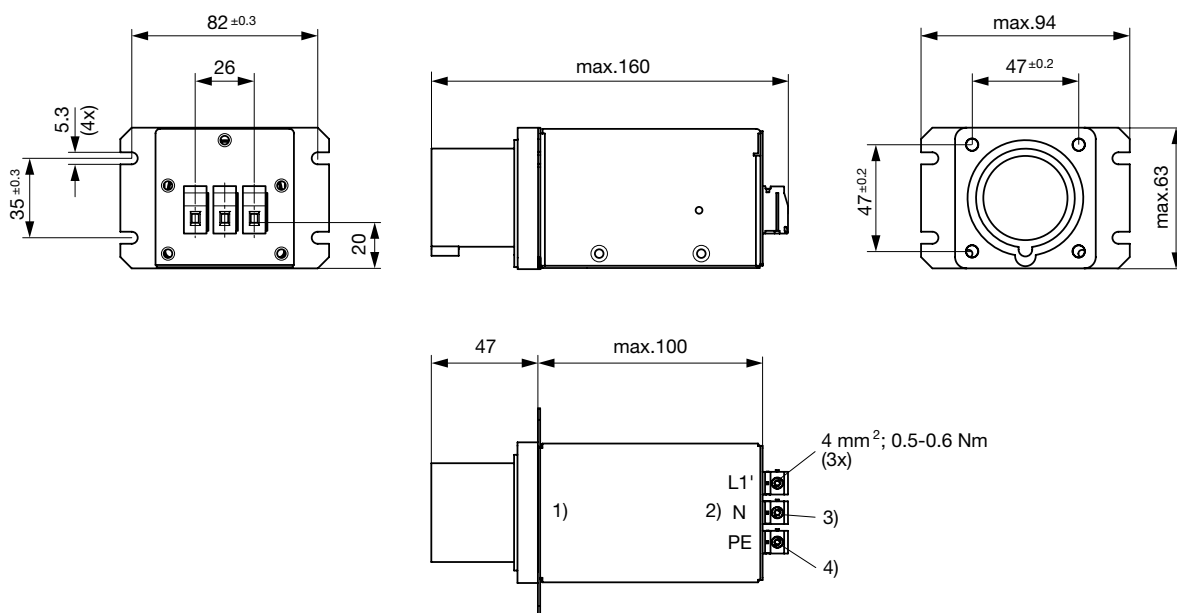
Compliances

The product complies with following Guide Lines

| Identification | Details | Initiator | Description |
|------------------------------------------------------------------------------------|------------------------------------------------|-------------|-------------------------------------------------------------------------------------------------------------------------------------------------------------------------------------------------------|
|  | CE declaration of conformity | SCHURTER AG | The CE marking declares that the product complies with the applicable requirements laid down in the harmonisation of Community legislation on its affixing in accordance with EU Regulation 765/2008. |
|  | UKCA declaration of conformity | SCHURTER AG | The UKCA marking declares that the product complies with the applicable requirements laid down in the British Amendment of Regulation (EC) 765/2008. |
|  | RoHS | SCHURTER AG | Directive RoHS 2011/65/EU, Amendment (EU) 2015/863 |
|  | China RoHS | SCHURTER AG | The law SJ / T 11363-2006 (China RoHS) has been in force since 1 March 2007. It is similar to the EU directive RoHS. |
|  | REACH | SCHURTER AG | On 1 June 2007, Regulation (EC) No 1907/2006 on the Registration, Evaluation, Authorization and Restriction of Chemicals 1 (abbreviated as "REACH") entered into force. |

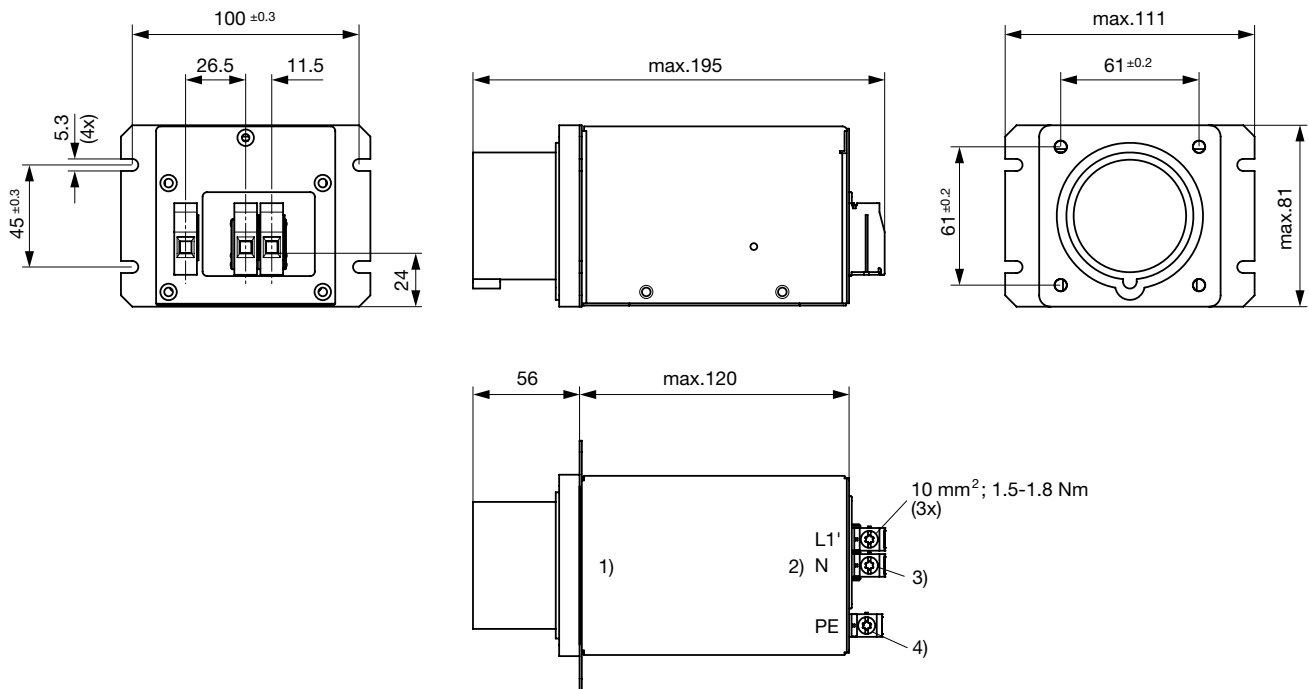
Dimension [mm]

Case QU



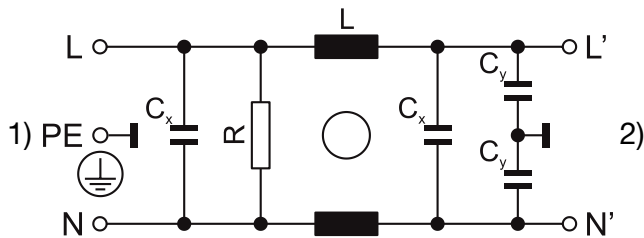
- 1) Line
- 2) Load
- 3) Blue
- 4) Yellow-Green

Case QT



- 1) Line
- 2) Load
- 3) Blue
- 4) Yellow-Green

Diagrams

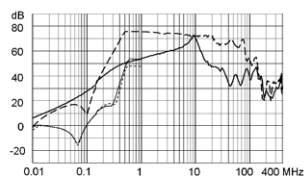
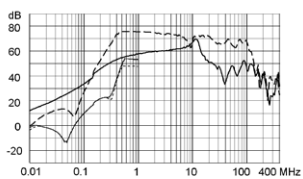


- 1) Line
- 2) Load

Attenuation Loss 0.1/100Ω differential mode 100/0.1Ω differential mode - - - - 50Ω differential mode ____ 50Ω common mode
 Industrial version

16 A

30 / 32 A



All Variants

| Rated Current @ Ta 50°C (40°C) [A] | Rated Voltage [VAC] | Powerloss @ 25°C, 50Hz [W] | Leakage Current @ 400VAC, 50Hz [mA]1) | Weight [kg] | Screw clamps [mm2] 2) | Housing | Packaging unit | Order Number |
|---------------------------------------|---------------------|-------------------------------|------------------------------------------------|-------------|--------------------------|---------|-------------------|--------------|
| 16 | 110 | 3 | 0.5 | 650 g | 4 | QU | 1 | 5500.2359 |
| 16 | 125/250 | 3 | 1 | 650 g | 4 | QU | 1 | 5500.2360 |
| 30 | 125 | 4.5 | 0.5 | 1100 g | 10 | QT | 1 | 5500.2361 |
| 32 | 125/250 | 5.1 | 1 | 1100 g | 10 | QT | 1 | 5500.2362 |

Most Popular:

Availability for all products can be searched real-time: <https://www.schurter.com/en/info-center/support-tools/stock-check-distributors>

- 1) Leakage current acc. IEC60950 - 5.2.3 - Annex D (situation when neutral is interrupted)
- 2) Maximum conductor cross section (wire gauge) to be used; a comparative table for AWG and mm² values can be found in the general product information <https://www.schurter.com/en/FAQ#10>